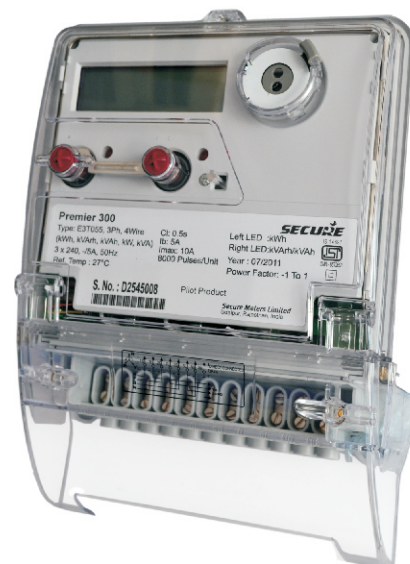


# Premier 300

## CT/VT-Operated Energy Meter

Premier is the family of CT/VT operated meters, which covers a wide range of power levels and offers flexible time-of-use tariff metering and communications capabilities.

Premier 300 is the latest offering from this family having enhanced event detection facility and interoperable DLMS communication protocol. It is available in various accuracy classes and wiring configurations.



### Application

- CT/VT-operated industrial and commercial billing purpose
- Remote data collection for billing and consumption analysis
- Transformer metering, boundary metering and substation monitoring

### Benefits

- A wide range for catering to various utilities requirement
- High precision metering
- Revenue protection
- Suitable for doing load analysis and energy audit

### Features

- True four quadrant metering
- Import/Export metering and forwarded metering option for LT/HT systems
- Distribution transformer metering events support viz high and low voltage, under and over load
- Time of day metering with maximum demand registration and automatic billing
- Backlit LCD display with annunciators for various critical events
- Scroll lock feature for continuous display of a desired parameter on display
- High-resolution energy display mode for dial test
- DLMS protocol for meter reading, with option for remote reading port
- Advanced event detection features for voltage, current and magnetic influences
- Two metrology LEDs for accuracy testing of different energy types
- Meter reading in the absence of mains, using internal battery

# Premier 300

## Technical specifications

### Electrical

	LT	HT
Connection type	CT-operated	CT/VT-operated
Wiring configuration	3-phase 4-wire	3-phase 3-wire, 3-phase 4-wire
Voltage range	230/240 V (P-N)	110 V (P-P), 63,5 V (P-N)

### Applicable to both LV and HV

Current range	-/5(10) A, -/1(2) A *
Accuracy	Class 0.2s, 0.5s for HT and Class 0.5s
Mains frequency	50 Hz $\pm$ 5%
Burden	As per standards

### Compliance

Standards	IS 14697, IEC 62052-11, IEC 62053-21, IS 15959
-----------	--

### Mechanical

Dimensions (W x H x D)	191 x 255 x 82 mm (approx.)
Weight	1.8 kg (approx.)
Enclosure	Engineering plastic
Sealing	Provision of sealing on main cover and terminal cover

### Environmental

Ingress protection	IP 51
Temperature	-10 °C to +55 °C (operating) -25 °C to +70 °C (storage)
Humidity	95% non-condensing RH

### Features

Tariff rate registers	Up to 8 rate registers, for two energy channels
Maximum Demand	Up to 2 types, configurable in 8 registers
Load Survey	Up to 90 days load profile for 8 parameters (configurable), with 30 minute integration period.
Communication	Optical port for local communication Optional RS 232 / RS 485 port on RJ-11 for remote communication. Optional RS 485 port on RJ-11 with MODBUS

\* For more details, contact your nearest sales office